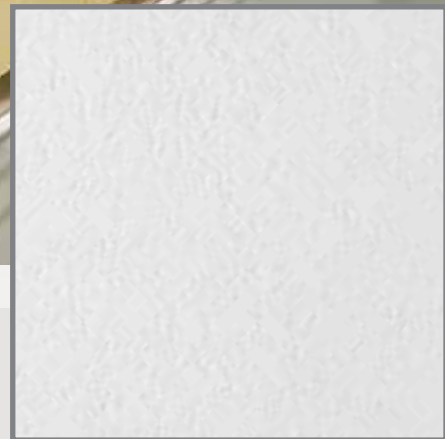




PLAIN



# PLAIN



36-44%  
EN ISO 14021

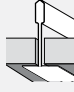
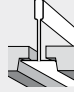
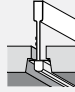

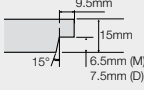
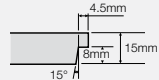
Recycled Content



87%  
EN ISO 7742-2 & 3

Light Reflectance

## PLAIN

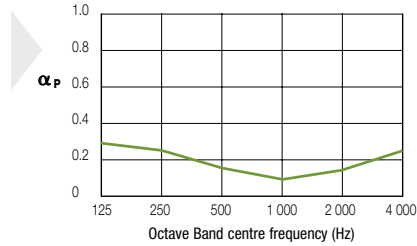
	BOARD	TEGULAR	MICROLOOK
	 Prelude XL <sup>2</sup> /TLX 24 mm Prelude Sixty <sup>2</sup>	 Prelude XL <sup>2</sup> /TLX 24 mm Prelude Sixty <sup>2</sup>	 Prelude XL <sup>2</sup> /TL 15 mm Interlude XL <sup>2</sup> 15 mm
			
600 x 600 x 15 mm	9587 M	9589 M	9590 M
625 x 625 x 15 mm	9587 D	9589 D	9590 D
600 x 1200 x 15 mm	9588 M		
625 x 1250 x 15 mm	9588 D		



EN ISO 354 &  
EN ISO 11654

$\alpha_w$	NRC	125	250	500	1000	2000	4000	Hz
<b>0.15(L)</b>	0.15	0.30	0.25	0.15	0.10	0.15	0.25	$\alpha_p$

Sound Absorption Class = E



EN 20140-9  
& EN 717-1

<b>D<sub>ncw</sub></b>	
<b>37 dB</b>	



EN 13501-1

EEA	Euroclass A2-s1, d0
-----	---------------------

RUS	KM1 (G1, V1, D1, T1) FZ 123
-----	-----------------------------



EN 12667  
& ISO 8301

$\lambda = 0.06$  W/m K



95 % RH



15 YEAR  
guarantee



4 kg/m<sup>2</sup>



Please contact our Armstrong Technical Sales Group for further details.

[www.armstrong.eu](http://www.armstrong.eu)



**Armstrong®**